

Self-Aligning Pads· adjustable with self-resetting

22741.0046



Product Description

Self-aligning pads are used as stop, support and thrust pad and are suitable for installation in clamping elements.
By resetting to the parallel position the contact point of the self-aligning pad provides a defined initial position, thus preventing the pad clamping in an oblique position when inserting the workpiece.

Material

Spring element

- Thermoplastic PUR

Ball

- Ball-bearing steel, hardened, bright

Body

- Heat-treated steel, tempered, phosphated

Nut

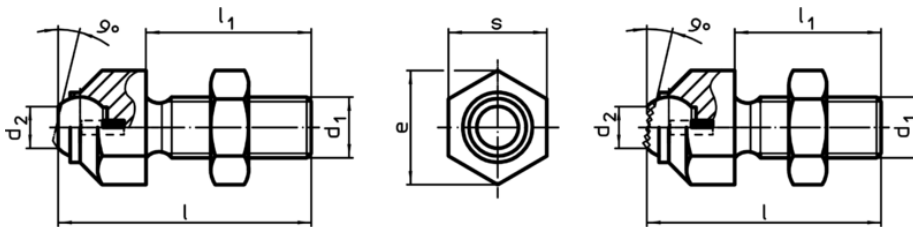
- Steel, blackened (ISO 4035)

More information

Notes

Ball protected against rotating.
Loading capacity valid for steel and stainless steel designs.
Special types on request.


Drawing



picture 1

picture 2

Order information

s	d ₁	Dimensions			d ₂	e	Ball	Load capacity for static load max. [kN]	Tightening torque max. [Nm]	 [g]	Art. No.
		l	l ₁	[mm]							
with flat-faced ball, plain surface – picture 1, Heat-treated steel											
46	M30 x 1,5	100	65		34,6	51	40	165	1355	797	22741.0046