

## Self-Aligning Pads · adjustable with self-resetting

22741.0016



### Product Description

Self-aligning pads are used as stop, support and thrust pad and are suitable for installation in clamping elements.

By resetting to the parallel position the contact point of the self-aligning pad provides a defined initial position, thus preventing the pad clamping in an oblique position when inserting the workpiece.

### Material

#### Spring element

- Thermoplastic PUR

#### Ball

- Ball-bearing steel, hardened, bright

#### Body

- Heat-treated steel, tempered, phosphated

#### Nut

- Steel, blackened (ISO 4035)

### More information

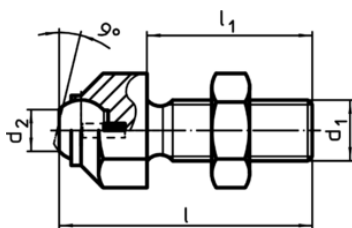
#### Notes

Ball protected against rotating.

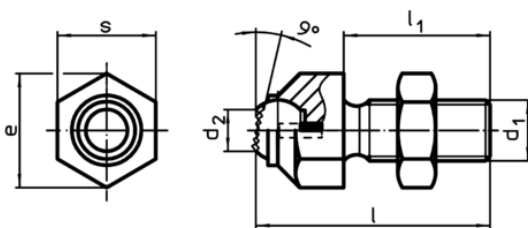
Loading capacity valid for steel and stainless steel designs.

Special types on request.

### Drawing




picture 1



picture 2

### Order information

s	d <sub>1</sub>	Dimensions					Ball	Load capacity for static load max. [kN]	Tightening torque max. [Nm]	 [g]	Art. No.
		l	l <sub>1</sub>	d <sub>2</sub>	e	[mm]					
with flat-faced ball, plain surface – picture 1, Heat-treated steel											
17	M10	45,7	30	8,6	19	12	8	46	43	22741.0016	