

## Self-Aligning Pads· adjustable

22740.0336



### Product Description

Self-aligning pads are used as stop, support and thrust pad and are suitable for installation in clamping elements.

### Material

#### Ball

- Ball-bearing steel, hardened, bright

#### Body

- Heat-treated steel, tempered, phosphated

#### Nut

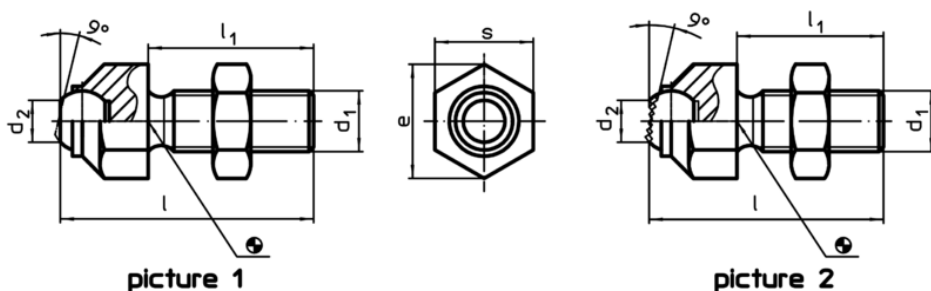
- Steel, blackened (ISO 4035)

### More information

#### Notes

Ball protected against rotating.  
Loading capacity valid for steel and stainless steel designs.  
Special types on request.

### Drawing



### Order information

s	d <sub>1</sub>	Dimensions					Ball	Load capacity for static load max. [kN]	Tightening torque max. [Nm]	g	Art. No.
		l	l <sub>1</sub>	d <sub>2</sub>	e	[mm]					
with flat-faced ball, ribbed surface – picture 2, Heat-treated steel											
36	M24	100	70	20	40	25	90	698	435	22740.0336	

### Application example

