

Self-Aligning Pads· adjustable

22740.0316



Product Description

Self-aligning pads are used as stop, support and thrust pad and are suitable for installation in clamping elements.

Material

Ball

- Ball-bearing steel, hardened, bright

Body

- Heat-treated steel, tempered, phosphated

Nut

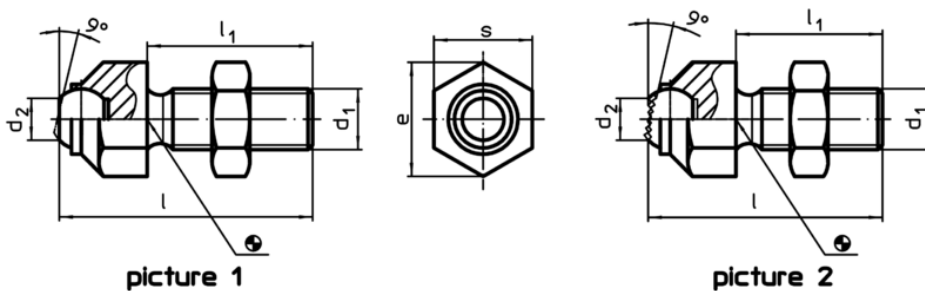
- Steel, blackened (ISO 4035)

More information

Notes

Ball protected against rotating.
Loading capacity valid for steel and stainless steel designs.
Special types on request.

Drawing



Order information

s	d ₁	Dimensions		d ₂	e	Ball	Load capacity for static load max. [kN]	Tightening torque max. [Nm]	g	Art. No.
		l	l ₁							
[mm]										
with flat-faced ball, ribbed surface – picture 2, Heat-treated steel										
17	M10	45,7	30	8,6	19	12	8	46	44	22740.0316

Application example

