

Self-Aligning Pads· adjustable

22740.0313



Product Description

Self-aligning pads are used as stop, support and thrust pad and are suitable for installation in clamping elements.

Material

Ball

- Ball-bearing steel, hardened, bright

Body

- Heat-treated steel, tempered, phosphated

Nut

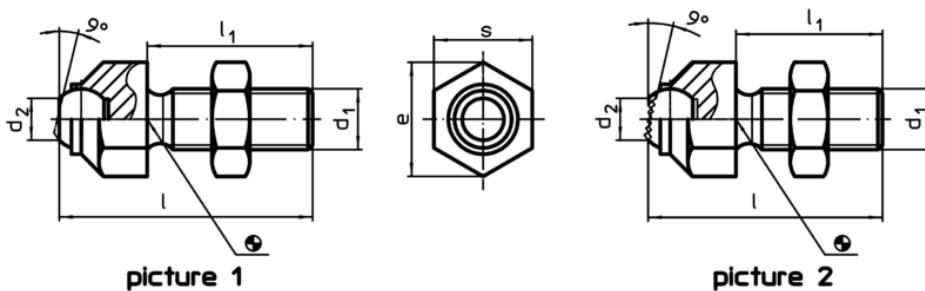
- Steel, blackened (ISO 4035)

More information

Notes

Ball protected against rotating.
Loading capacity valid for steel and stainless steel designs.
Special types on request.

Drawing



Order information

s	d ₁	l	Dimensions			Ball	Load capacity for static load max. [kN]	Tightening torque max. [Nm]	g	Art. No.
			l ₁	d ₂	e					
with flat-faced ball, ribbed surface – picture 2, Heat-treated steel										
13	M8	36,6	25	5,8	14,5	8,5	8	25	20	22740.0313

Application example

