

Self-Aligning Pads· adjustable

22740.0146



Product Description

Self-aligning pads are used as stop, support and thrust pad and are suitable for installation in clamping elements.

Material

Ball
• Stainless steel 1.3541, nickel-plated

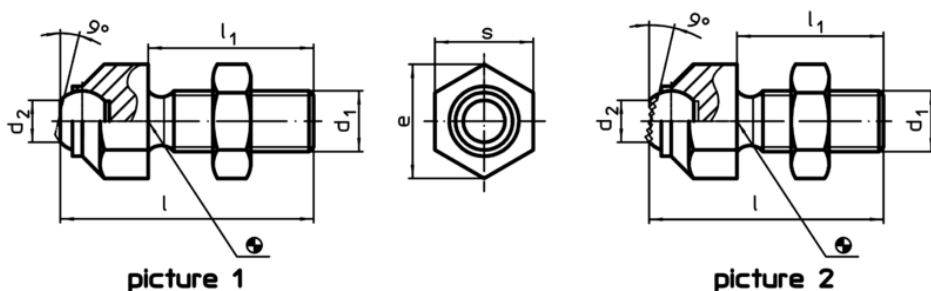
Body
• Stainless steel 1.4057, heat-treated

Nut
• Stainless steel

More information

Notes
Ball protected against rotating.
Loading capacity valid for steel and stainless steel designs.
Special types on request.

Drawing



Order information

s	d ₁	Dimensions				d ₂	e	Ball	Load capacity for static load max. [kN]	Tightening torque max. [Nm]	g	Art. No.
		l	l ₁	[mm]								
with flat-faced ball, plain surface – picture 1, Stainless steel												
46	M30 x 1,5	100	65			34,6	51	40	165	1355	772	22740.0146

Application example

