

Self-Aligning Pads· adjustable

22740.0124



Product Description

Self-aligning pads are used as stop, support and thrust pad and are suitable for installation in clamping elements.

Material

Ball

- Stainless steel 1.3541, nickel-plated

Body

- Stainless steel 1.4057, heat-treated

Nut

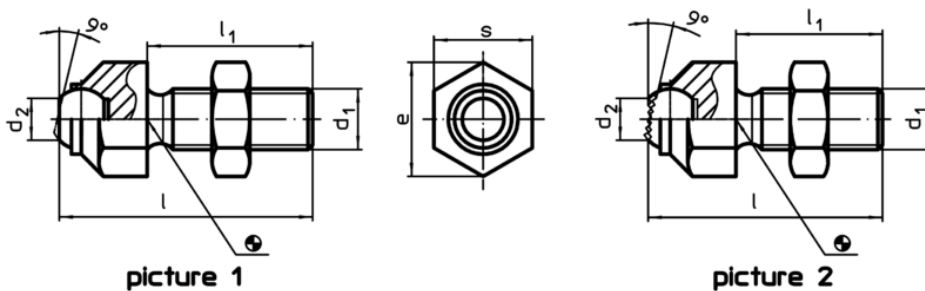
- Stainless steel

More information

Notes

Ball protected against rotating.
Loading capacity valid for steel and stainless steel designs.
Special types on request.

Drawing



Order information

s	d ₁	Dimensions				d ₂	e	Ball	Load capacity for static load max. [kN]	Tightening torque max. [Nm]	g	Art. No.
		l	l ₁	[mm]								
with flat-faced ball, plain surface – picture 1, Stainless steel												
24	M16	60,7	40			10,5	27	16	25	206	128	22740.0124

Application example

