

## Self-Aligning Pads· adjustable

22740.0116



### Product Description

Self-aligning pads are used as stop, support and thrust pad and are suitable for installation in clamping elements.

### Material

#### Ball

- Stainless steel 1.3541, nickel-plated

#### Body

- Stainless steel 1.4057, heat-treated

#### Nut

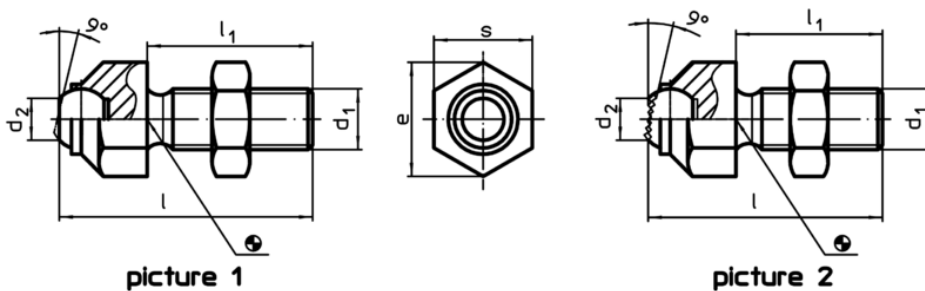
- Stainless steel

### More information

#### Notes

Ball protected against rotating.  
Loading capacity valid for steel and stainless steel designs.  
Special types on request.

### Drawing



### Order information

s	d <sub>1</sub>	Dimensions		d <sub>2</sub>	e	Ball	Load capacity for static load max. [kN]	Tightening torque max. [Nm]	[g]	Art. No.
		l	l <sub>1</sub>							
with flat-faced ball, plain surface – picture 1, Stainless steel										
17	M10	45,7	30	8,6	19	12	8	46	44	22740.0116

### Application example

