

Self-Aligning Pads· adjustable

22740.0046



Product Description

Self-aligning pads are used as stop, support and thrust pad and are suitable for installation in clamping elements.

Material

Ball

- Ball-bearing steel, hardened, bright

Body

- Heat-treated steel, tempered, phosphated

Nut

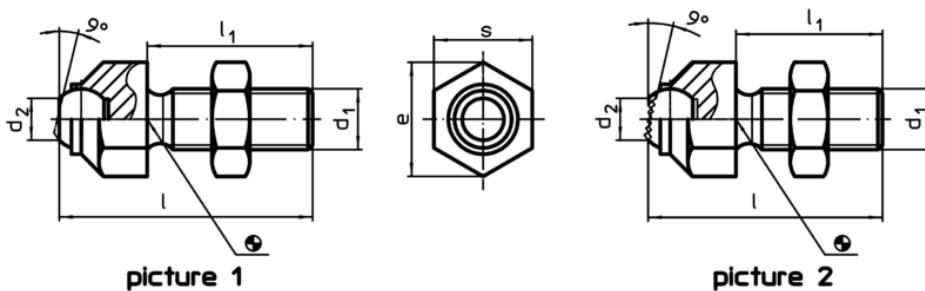
- Steel, blackened (ISO 4035)

More information

Notes

Ball protected against rotating.
Loading capacity valid for steel and stainless steel designs.
Special types on request.

Drawing



Order information

s	d ₁	Dimensions				d ₂	e	Ball	Load capacity for static load max. [kN]	Tightening torque max. [Nm]	g	Art. No.
		l	l ₁	[mm]								
with flat-faced ball, plain surface – picture 1, Heat-treated steel												
46	M30 x 1,5	100	65			34,6	51	40	165	1355	772	22740.0046

Application example

