

Self-Aligning Pads· adjustable

22740.0024



Product Description

Self-aligning pads are used as stop, support and thrust pad and are suitable for installation in clamping elements.

Material

Ball

- Ball-bearing steel, hardened, bright

Body

- Heat-treated steel, tempered, phosphated

Nut

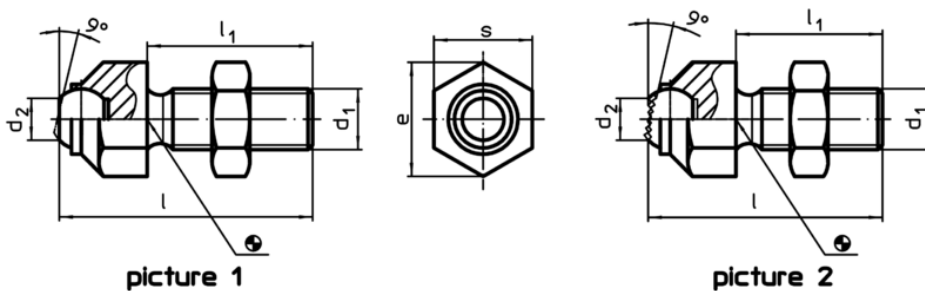
- Steel, blackened (ISO 4035)

More information


Notes

Ball protected against rotating.
Loading capacity valid for steel and stainless steel designs.
Special types on request.

Drawing



Order information

Dimensions							Ball	Load capacity for static load max. [kN]	Tightening torque max. [Nm]	 [g]	Art. No.
s	d ₁	l	l ₁	d ₂	e	[mm]					
with flat-faced ball, plain surface – picture 1, Heat-treated steel											
24	M16	60,7	40	10,5	27	16	25	206	128	22740.0024	

Application example

