

Self-Aligning Pads· self-resetting

22731.0728



Product Description

Self-aligning pads are used as stop, support and thrust pad and are suitable for installation in clamping elements.
By resetting to the parallel position the contact point of the self-aligning pad provides a defined initial position, thus preventing the pad clamping in an oblique position when inserting the workpiece.

Material

Spring element

- Thermoplastic PUR

Ball

- Ball-bearing steel, hardened, bright

Body

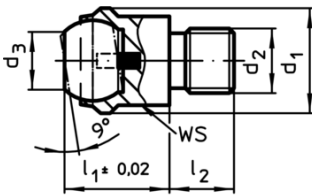
- Heat-treated steel, tempered, phosphated

More information

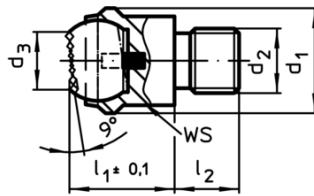
Notes

Ball protected against rotating.
Loading capacity valid for steel and stainless steel designs.

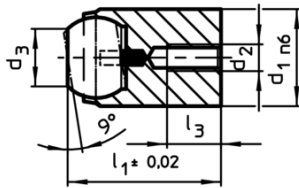
Drawing



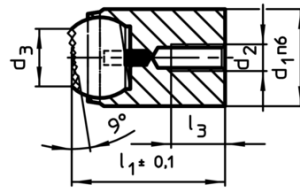
picture 1



picture 2



picture 3



picture 4

Order information

d ₁ n6	d ₂	Dimensions				Ball	Location hole		Load capacity for static load ¹⁾ max. [kN]	Tightening torque max. [Nm]	[g]	Art. No.
		d ₃	l ₁	l ₃ max.	Ø		Depth min. [mm]					
28	M5	20	34	6	25	28	22	90	6	150	22731.0728	

¹⁾ Applies only when the minimum bore depth is kept to.

Application example

