

Self-Aligning Pads· self-resetting

22731.0452



Product Description

Self-aligning pads are used as stop, support and thrust pad and are suitable for installation in clamping elements.

By resetting to the parallel position the contact point of the self-aligning pad provides a defined initial position, thus preventing the pad clamping in an oblique position when inserting the workpiece.

Material

Spring element

- Thermoplastic PUR

Ball

- Stainless steel 1.3541, nickel-plated

Body

- Stainless steel 1.4057, heat-treated

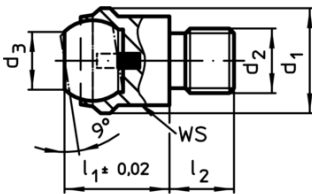
More information

Notes

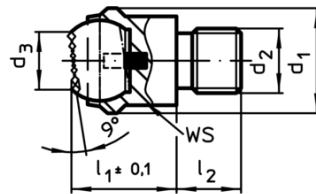
Ball protected against rotating.

Loading capacity valid for steel and stainless steel designs.

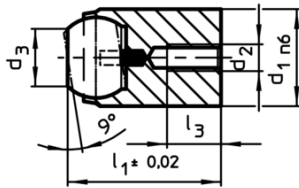
Drawing



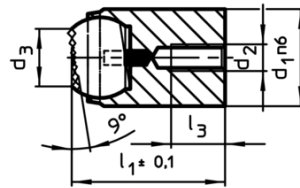
picture 1



picture 2




picture 3



picture 4

Order information

Dimensions					Ball	Location hole		Load capacity for static load ¹⁾ max. [kN]	Tightening torque max. [Nm]	 [g]	Art. No.
d ₁ n6	d ₂	d ₃	l ₁	l ₃ max.		Ø H7	Depth min. [mm]				
[mm]											
with locating hole, flat-faced ball, plain surface – picture 3, Stainless steel											
12	M3	7,2	17	3,2	10	12	12	10	1,3	14	22731.0452

¹⁾ Applies only when the minimum bore depth is kept to.

Application example

