

## Self-Aligning Pads· self-resetting

22731.0428



### Product Description

Self-aligning pads are used as stop, support and thrust pad and are suitable for installation in clamping elements.  
By resetting to the parallel position the contact point of the self-aligning pad provides a defined initial position, thus preventing the pad clamping in an oblique position when inserting the workpiece.

### Material

#### Spring element

- Thermoplastic PUR

#### Ball

- Ball-bearing steel, hardened, bright

#### Body

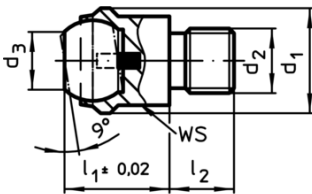
- Heat-treated steel, tempered, phosphated

### More information

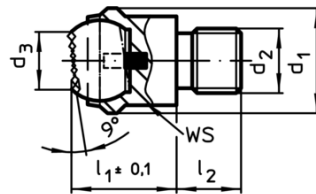
#### Notes

Ball protected against rotating.  
Loading capacity valid for steel and stainless steel designs.

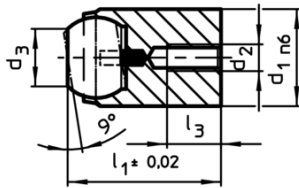
### Drawing



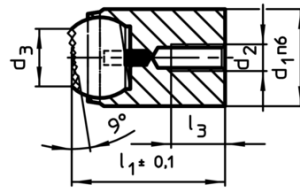
picture 1



picture 2




picture 3



picture 4

### Order information

d <sub>1</sub> n6	d <sub>2</sub>	Dimensions			Ball	Location hole		Load capacity for static load <sup>1)</sup> max. [kN]	Tightening torque max. [Nm]	 [g]	Art. No.
		d <sub>3</sub>	l <sub>1</sub>	l <sub>3</sub> max.		Ø H7	Depth min. [mm]				
with locating hole, flat-faced ball, plain surface – picture 3, Heat-treated steel											
28	M5	20	34	6	25	28	22	90	6	150	22731.0428

<sup>1)</sup> Applies only when the minimum bore depth is kept to.

Application example

