

## Self-Aligning Pads· self-resetting

22731.0418



### Product Description

Self-aligning pads are used as stop, support and thrust pad and are suitable for installation in clamping elements.  
By resetting to the parallel position the contact point of the self-aligning pad provides a defined initial position, thus preventing the pad clamping in an oblique position when inserting the workpiece.

### Material

#### Spring element

- Thermoplastic PUR

#### Ball

- Ball-bearing steel, hardened, bright

#### Body

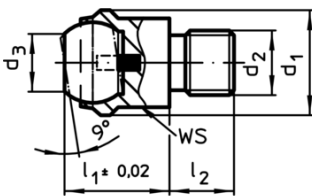
- Heat-treated steel, tempered, phosphated

### More information

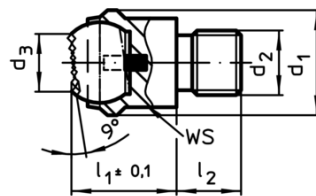
#### Notes

Ball protected against rotating.  
Loading capacity valid for steel and stainless steel designs.

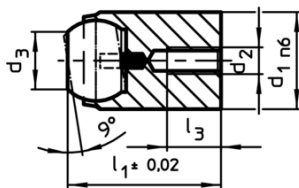
### Drawing



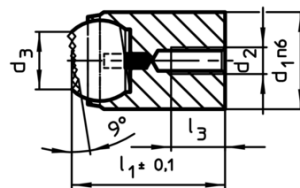
picture 1



picture 2




picture 3



picture 4

### Order information

Dimensions						Location hole		Load capacity for static load <sup>1)</sup> max. [kN]	Tightening torque max. [Nm]	 [g]	Art. No.
d <sub>1</sub> n6	d <sub>2</sub>	d <sub>3</sub> [mm]	l <sub>1</sub>	l <sub>3</sub> max.	Ball	Ø H7	Depth min. [mm]				
with locating hole, flat-faced ball, plain surface – picture 3, Heat-treated steel											
18	M4	10,5	23	4	16	18	14	25	2,9	40	22731.0418

<sup>1)</sup> Applies only when the minimum bore depth is kept to.

Application example

