

Self-Aligning Pads· self-resetting

22731.0320



Product Description

Self-aligning pads are used as stop, support and thrust pad and are suitable for installation in clamping elements.

By resetting to the parallel position the contact point of the self-aligning pad provides a defined initial position, thus preventing the pad clamping in an oblique position when inserting the workpiece.

Material

Spring element

- Thermoplastic PUR

Ball

- Ball-bearing steel, hardened, bright

Body

- Heat-treated steel, tempered, phosphated

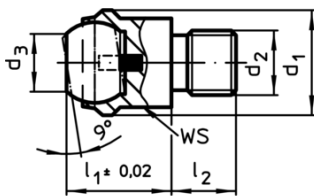
More information

Notes

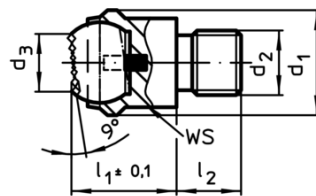
Ball protected against rotating.

Loading capacity valid for steel and stainless steel designs.

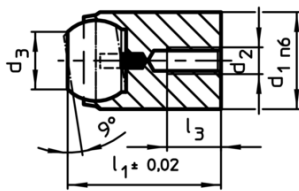
Drawing



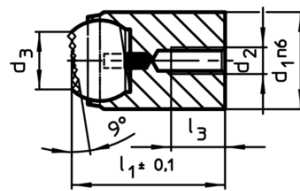
picture 1



picture 2



picture 3



picture 4

Order information

| d ₁ | d ₂ | Dimensions | | | | Ball | WS | Load capacity for static load max. | Tightening torque max. | Art. No. |
|---|----------------|----------------|----------------|----------------|----------------|------|------|--|------------------------------|------------|
| | | d ₃ | l ₁ | l ₂ | l ₃ | | | | | |
| | | [mm] | | | | | [mm] | [kN] | [Nm] | [g] |
| with male thread, flat-faced ball, ribbed surface – picture 2, Heat-treated steel | | | | | | | | | | |
| 20 | M12 | 10,5 | 18 | 12 | 16 | 17 | 25 | 82 | 44 | 22731.0320 |

Application example

