

Self-Aligning Pads· self-resetting

22731.0313



Product Description

Self-aligning pads are used as stop, support and thrust pad and are suitable for installation in clamping elements.
By resetting to the parallel position the contact point of the self-aligning pad provides a defined initial position, thus preventing the pad clamping in an oblique position when inserting the workpiece.

Material

Spring element

- Thermoplastic PUR

Ball

- Ball-bearing steel, hardened, bright

Body

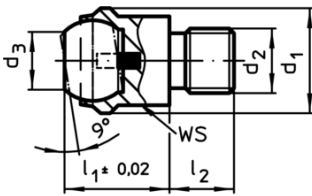
- Heat-treated steel, tempered, phosphated

More information

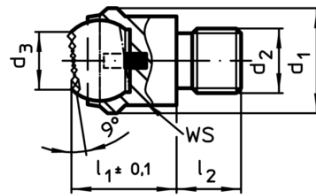
Notes

Ball protected against rotating.
Loading capacity valid for steel and stainless steel designs.

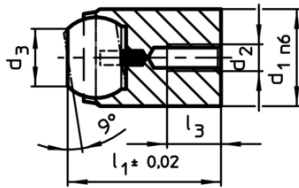
Drawing



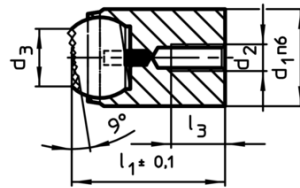
picture 1



picture 2



picture 3



picture 4

Order information

d ₁	d ₂	Dimensions				Ball	WS	Load capacity for static load max.	Tightening torque max.	g	Art. No.
		d ₃	l ₁	l ₂	l ₃						
[mm]											
with male thread, flat-faced ball, ribbed surface – picture 2, Heat-treated steel											
13	M8	7,2	13	8	10	11	10	25	14	22731.0313	

Application example

