

Self-Aligning Pads· self-resetting

22731.0160



Product Description

Self-aligning pads are used as stop, support and thrust pad and are suitable for installation in clamping elements.

By resetting to the parallel position the contact point of the self-aligning pad provides a defined initial position, thus preventing the pad clamping in an oblique position when inserting the workpiece.

Material

Spring element

- Thermoplastic PUR

Ball

- Stainless steel 1.3541, nickel-plated

Body

- Stainless steel 1.4057, heat-treated

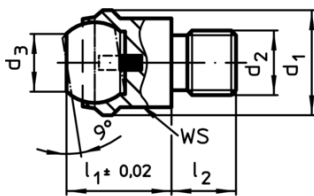
More information

Notes

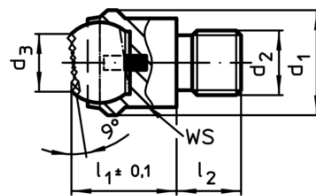
Ball protected against rotating.

Loading capacity valid for steel and stainless steel designs.

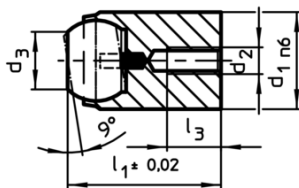
Drawing



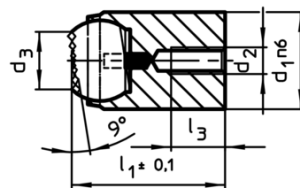
picture 1



picture 2




picture 3



picture 4

Order information

| d ₁ | d ₂ | Dimensions | | | | Ball | WS | Load capacity for static load max. | Tightening torque max. |  | Art. No. |
|---|----------------|----------------|----------------|----------------|----------------|------|------|--|------------------------------|---|----------|
| | | d ₃ | l ₁ | l ₂ | l ₃ | | | | | | |
| [mm] | | | | | | [mm] | [kN] | [Nm] | [g] | | |
| with male thread, flat-faced ball, plain surface – picture 1, Stainless steel | | | | | | | | | | | |
| 50 | M24 | 34,5 | 35 | 24 | 40 | 41 | 165 | 698 | 526 | 22731.0160 | |

Application example

