

## Self-Aligning Pads· self-resetting

22731.0113



### Product Description

Self-aligning pads are used as stop, support and thrust pad and are suitable for installation in clamping elements.

By resetting to the parallel position the contact point of the self-aligning pad provides a defined initial position, thus preventing the pad clamping in an oblique position when inserting the workpiece.

### Material

#### Spring element

- Thermoplastic PUR

#### Ball

- Stainless steel 1.3541, nickel-plated

#### Body

- Stainless steel 1.4057, heat-treated

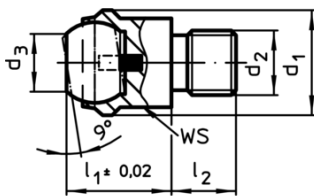
### More information

#### Notes

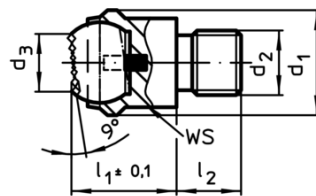
Ball protected against rotating.

Loading capacity valid for steel and stainless steel designs.

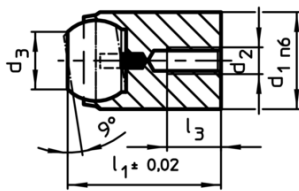
### Drawing



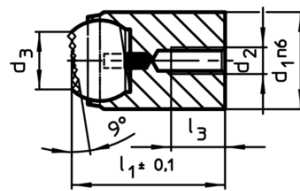
picture 1



picture 2



picture 3



picture 4

### Order information

d <sub>1</sub>	d <sub>2</sub>	Dimensions				Ball	WS	Load capacity for static load max.	Tightening torque max.	g	Art. No.
		d <sub>3</sub>	l <sub>1</sub>	l <sub>2</sub>	l <sub>3</sub>						
[mm]											
with male thread, flat-faced ball, plain surface – picture 1, Stainless steel											
13	M8	7,2	13	8	10	11	10	25	14	22731.0113	

Application example

