

Self-Aligning Pads

22730.0728



Product Description

Self-aligning pads are used as stop, support and thrust pad and are suitable for installation in clamping elements.

Material

Ball

- Ball-bearing steel, hardened, bright

Body

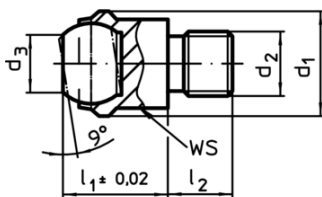
- Heat-treated steel, tempered, phosphated

More information

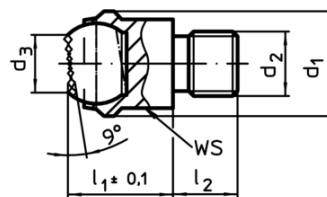
Notes

Ball protected against rotating.
Loading capacity valid for steel and stainless steel designs.

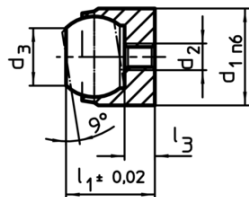
Drawing



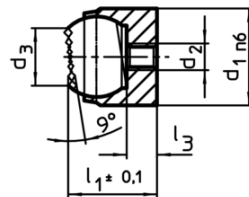
picture 1



picture 2




picture 3



picture 4

Order information

d ₁ n6	d ₂	Dimensions			Ball	Location hole		Load capacity for static load ¹⁾ max. [kN]	Tightening torque max. [Nm]	 [g]	Art. No.
		d ₃	l ₁	l ₃ max.		Ø H7	Depth min. [mm]				
28	M5	20	25	5,5	25	28	13	90	6	108	22730.0728

¹⁾ Applies only when the minimum bore depth is kept to.

Application example

