

Self-Aligning Pads with hard metal ball, ribbed

22730.0401



Product Description

Especially designed for cast parts (hard casting crust). To be used as support, thrust pad and for build into clamping elements.

Material

Ball

- Hard metal, ribbed, nickel-plated

Body

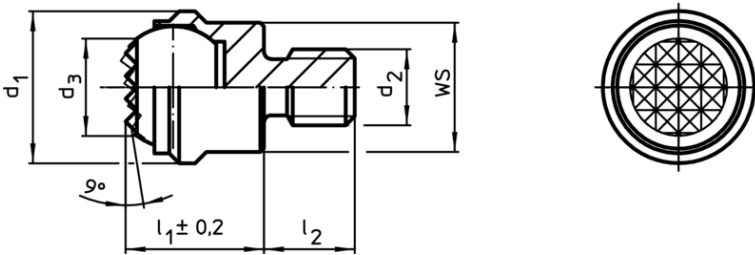
- Stainless steel 1.4057, heat-treated

More information

Notes

Ball protected against rotating.
Loading capacity valid for steel and stainless steel designs.

Drawing



Order information

d ₁	d ₂	Dimensions				Ball	WS	Load capacity for static load max.	Tightening torque max.	g	Art. No.
		d ₃	l ₁ ±0,2	l ₂ -0,5	[mm]						
with male thread, flat-faced ball, ribbed surface, Stainless steel											
50	M24	34,5	35	24	40	41	165	698	673	22730.0401	

Application example

