

Self-Aligning Pads with hard metal ball, ribbed

22730.0399



Product Description

Especially designed for cast parts (hard casting crust). To be used as support, thrust pad and for build into clamping elements.

Material

Ball

- Hard metal, ribbed, nickel-plated

Body

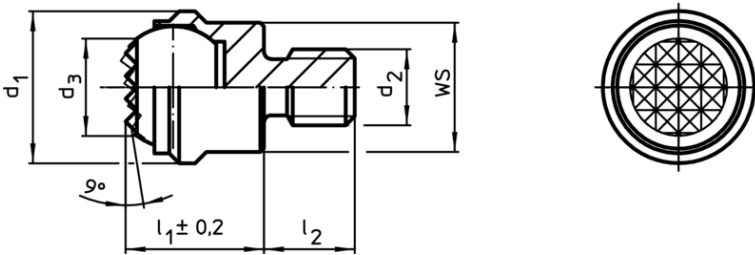
- Stainless steel 1.4057, heat-treated

More information

Notes

Ball protected against rotating.
Loading capacity valid for steel and stainless steel designs.

Drawing



Order information

d ₁	d ₂	Dimensions			Ball	WS	Load capacity for static load max.	Tightening torque max.	g	Art. No.
		d ₃	l ₁ ±0,2	l ₂ -0,5						
with male thread, flat-faced ball, ribbed surface, Stainless steel										
30	M16	20	27	16	25	27	90	206	190	22730.0399

Application example

