

Self-Aligning Pads

22730.0360

Product Description

Self-aligning pads are used as stop, support and thrust pad and are suitable for installation in clamping elements.

Material

Ball

- Ball-bearing steel, hardened, bright

Body

- Heat-treated steel, tempered, phosphated

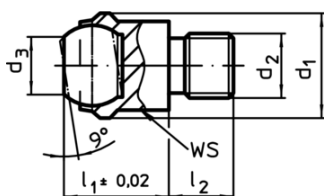
More information

Notes

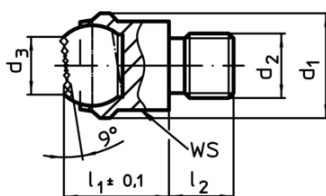
Ball protected against rotating.
Loading capacity valid for steel and stainless steel designs.



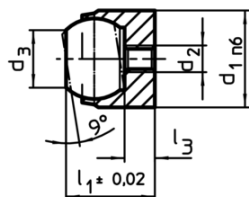
Drawing



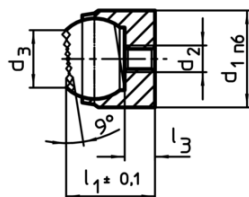
picture 1



picture 2




picture 3



picture 4

Order information

d ₁	d ₂	Dimensions			Ball	WS	Load capacity for static load max.	Tightening torque max.	 [g]	Art. No.
		d ₃	l ₁	l ₂						
with male thread, flat-faced ball, ribbed surface – picture 2, Heat-treated steel										
50	M24	34,5	35	24	40	41	165	698	521	22730.0360

Application example

