

## Ball-Ended Thrust Screws• headless, ball protected against rotating

22700.0775

### Product Description

For clamping and supporting of surfaces that are not exactly parallel.  
Maximised load transmission due to moveable ball.

#### Material

##### Ball

- Ball-bearing steel, hardened

##### Screw

- Heat-treated steel,  $1200 \pm 100 \text{ N/mm}^2$

#### More information

##### Notes

Ball protected against rotating.  
Special types on request.

##### References

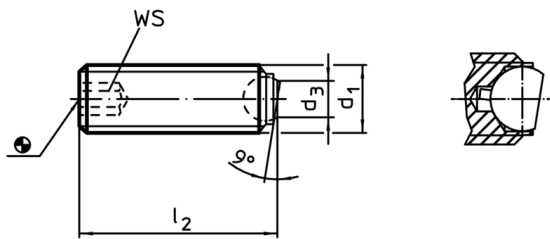
Thread lock on request, please refer to  
appendix - Technical Data -

##### Further products

- Ball-Ended Thrust Screws, headless, flat-faced ball
- Ball-Ended Thrust Screws, headless, with fine-pitch thread
- Ball-Ended Thrust Screws, headless, flat-faced ball and hexalobular socket



### Drawing



### Order information

| d <sub>1</sub>                                      | Dimensions     |                | Ball | WS | Load capacity<br>for static load <sup>1)</sup><br>max. | [g] | Art. No.   |
|---|----------------|----------------|------|----|--|-----|------------|
|   | l <sub>2</sub> | d <sub>3</sub> |      |    |  |     |            |
| flat-faced ball, ribbed surface, Heat-treated steel |                |                |      |    |  |     |            |
| M20   | 50             | 13,5           | 15   | 10 | 60   | 90  | 22700.0775 |

<sup>1)</sup> Statements on load capacity are not valid for the stainless steel type.

Application example

