

Ball-Ended Thrust Screws• headless, ball protected against rotating

22700.0626

Product Description

For clamping and supporting of surfaces that are not exactly parallel.
Maximised load transmission due to moveable ball.



Material

Ball

- Ball-bearing steel, hardened

Screw

- Heat-treated steel, $1200 \pm 100 \text{ N/mm}^2$

More information

Notes

Ball protected against rotating.
Special types on request.

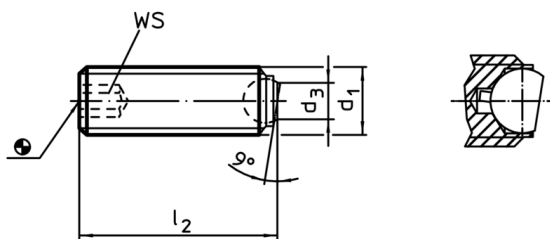
References

Thread lock on request, please refer to
appendix - Technical Data -

Further products

- Ball-Ended Thrust Screws, headless, flat-faced ball
- Ball-Ended Thrust Screws, headless, with fine-pitch thread
- Ball-Ended Thrust Screws, headless, flat-faced ball and hexalobular socket

Drawing



Order information

d ₁	Dimensions			Ball	WS	Load capacity for static load ¹⁾ max.	[g]	Art. No.
	l ₂	d ₃	[mm]					
flat-faced ball, plain surface, Heat-treated steel								
M12	40	7,2		8,5	6	18	24	22700.0626

¹⁾ Statements on load capacity are not valid for the stainless steel type.

Application example

