

## Ball-Ended Thrust Screws• headless, ball protected against rotating

22700.0584

### Product Description

For clamping and supporting of surfaces that are not exactly parallel.  
Maximised load transmission due to moveable ball.

### Material

#### Ball

- Ball-bearing steel, hardened

#### Screw

- Heat-treated steel,  $1200 \pm 100 \text{ N/mm}^2$

### More information

#### Notes

Ball protected against rotating.  
Special types on request.

#### References

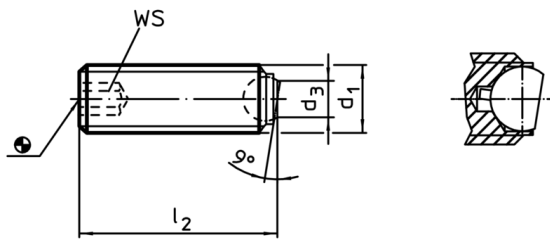
Thread lock on request, please refer to  
appendix - Technical Data -

#### Further products

- Ball-Ended Thrust Screws, headless, flat-faced ball
- Ball-Ended Thrust Screws, headless, with fine-pitch thread
- Ball-Ended Thrust Screws, headless, flat-faced ball and hexalobular socket



### Drawing



### Order information

d <sub>1</sub>	l <sub>2</sub>	Dimensions		Ball	WS	Load capacity for static load <sup>1)</sup> max.	[g]	Art. No.
		d <sub>3</sub>	[mm]					
flat-faced ball, plain surface, Heat-treated steel								
M8	20	4,5		5,5	4	9	5,1	22700.0584

<sup>1)</sup> Statements on load capacity are not valid for the stainless steel type.

Application example

