

Ball-Ended Thrust Screws • headless, ball protected against rotating

22700.0564

Product Description

For clamping and supporting of surfaces that are not exactly parallel.
Maximised load transmission due to moveable ball.



Material

Ball

- Ball-bearing steel, hardened

Screw

- Heat-treated steel, $1200 \pm 100 \text{ N/mm}^2$

More information

Notes

Ball protected against rotating.
Special types on request.

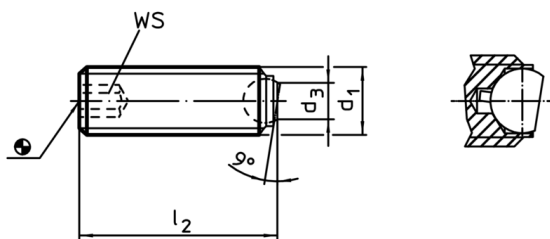
References

Thread lock on request, please refer to
appendix - Technical Data -

Further products

- Ball-Ended Thrust Screws, headless, flat-faced ball
- Ball-Ended Thrust Screws, headless, with fine-pitch thread
- Ball-Ended Thrust Screws, headless, flat-faced ball and hexalobular socket

Drawing



Order information

Dimensions				Ball	WS	Load capacity for static load ¹⁾ max.	[g]	Art. No.
d ₁	l ₂	d ₃	[mm]					
flat-faced ball, plain surface, Heat-treated steel								
M6	16	3,2	4	3	6	2,3	22700.0564	

¹⁾ Statements on load capacity are not valid for the stainless steel type.

Application example

