

## Ball-Ended Thrust Screws• headed, ball protected against rotating

22700.0086



### Product Description

For clamping and supporting of surfaces that are not exactly parallel.  
Maximised load transmission due to moveable ball.

### Material

#### Ball

- Ball-bearing steel, hardened

#### Screw

- Heat-treated steel,  $1200 \pm 100 \text{ N/mm}^2$

### More information

#### Notes

Note: Thread runout  $l_4$  !  
Ball protected against rotating.  
Special types on request.

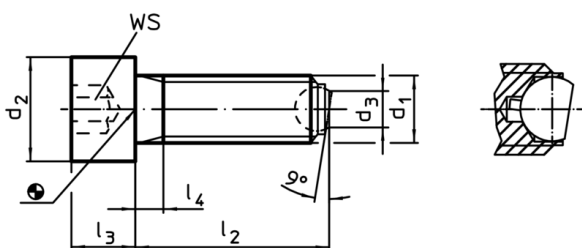
#### References

Thread lock on request, please refer to  
appendix - Technical Data -

#### Further products

- Ball-Ended Thrust Screws, headed, flat-faced ball

### Drawing



### Order information

Dimensions							Ball	WS	Load capacity for static load <sup>1)</sup> max. [kN]	[g]	Art. No.
$d_1$	$l_2$	$d_2$	$d_3$	$l_3$	$l_4$	[mm]					
flat-faced ball, plain surface, Heat-treated steel											
M8	50	13	4,5	8	22	5,5	6	9	23	22700.0086	

<sup>1)</sup> Statements on load capacity are not valid for the stainless steel type.

### Application example

