

Seating Pins • pin shape

22680.0488



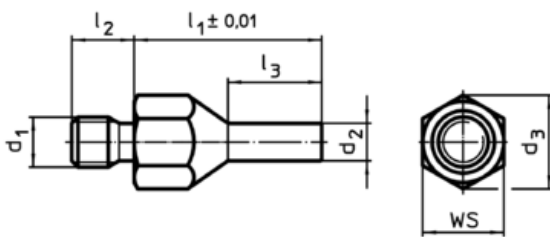
Product Description

To be used as solid and precise seat and stop. The pin-shaped form of this locating pin allows an application in components with narrow seating points. Surface induction hardened and ground.

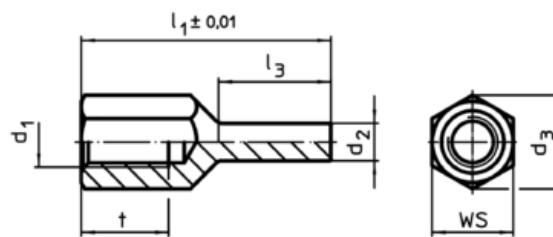
Material

- Heat-treated steel, tempered, blackened

Drawing



picture 1



picture 2

Order information

l ₁ ±0,01	d ₁	Dimensions				d ₃	WS [mm]	Tightening torque max. [Nm]	g	Art. No.
		d ₂	l ₃	t	[mm]					
with female thread – picture 2										
60	M12	8	28	18	21,2	19	60	63	22680.0488	

Application example

