

## Seating Pins • pin shape

22680.0486



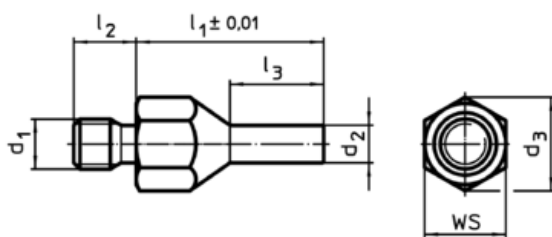
### Product Description

To be used as solid and precise seat and stop. The pin-shaped form of this locating pin allows an application in components with narrow seating points. Surface induction hardened and ground.

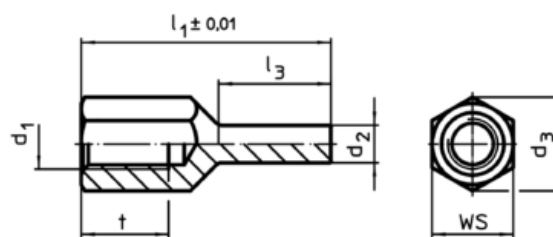
### Material

- Heat-treated steel, tempered, blackened

### Drawing




picture 1



picture 2

### Order information

$l_1$ $\pm 0,01$	$d_1$	Dimensions				$d_3$	WS [mm]	Tightening torque max. [Nm]	 [g]	Art. No.
		$d_2$	$l_3$	t	[mm]					
with female thread – picture 2										
40	M12	8	18	12	21,2	19	60	41	22680.0486	

### Application example

