

## Seating Pins • pin shape

22680.0476



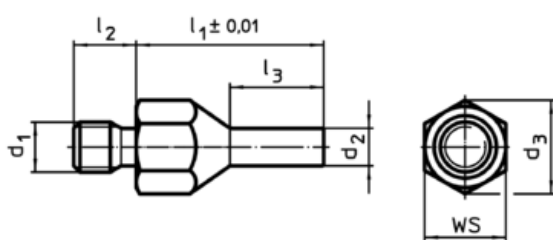
### Product Description

To be used as solid and precise seat and stop. The pin-shaped form of this locating pin allows an application in components with narrow seating points. Surface induction hardened and ground.

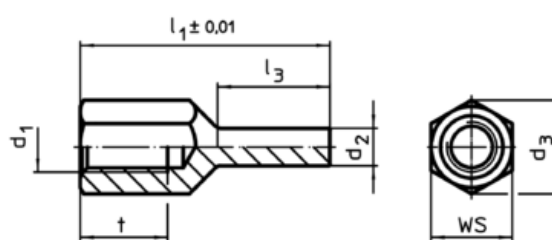
### Material

- Heat-treated steel, tempered, blackened

### Drawing



picture 1



picture 2

### Order information

$l_1$ $\pm 0,01$	$d_1$	Dimensions				$d_3$	WS [mm]	Tightening torque max. [Nm]	g	Art. No.
		$d_2$	$l_3$	$t$	[mm]					
with female thread – picture 2										
30	M10	8	12	10	19	17	32	28	22680.0476	

### Application example

