

Seating Pins • pin shape

22680.0472



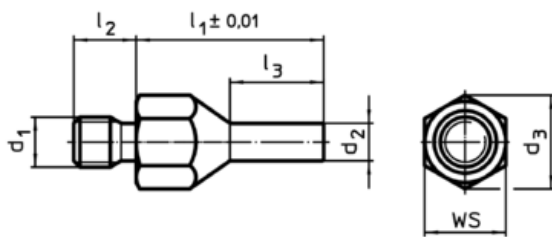
Product Description

To be used as solid and precise seat and stop. The pin-shaped form of this locating pin allows an application in components with narrow seating points. Surface induction hardened and ground.

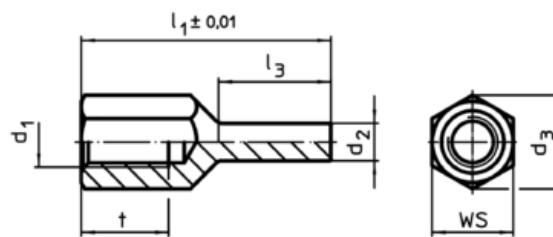
Material

- Heat-treated steel, tempered, blackened

Drawing



picture 1



picture 2

Order information

l_1 $\pm 0,01$	d_1	Dimensions					WS [mm]	Tightening torque max. [Nm]	g	Art. No.
		d_2	l_3	t	d_3	[mm]				
with female thread – picture 2										
30	M10	6	12	10	19	17	32	24	22680.0472	

Application example

