

Seating Pins • pin shape

22680.0454



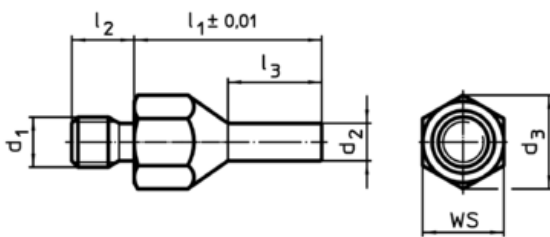
Product Description

To be used as solid and precise seat and stop. The pin-shaped form of this locating pin allows an application in components with narrow seating points. Surface induction hardened and ground.

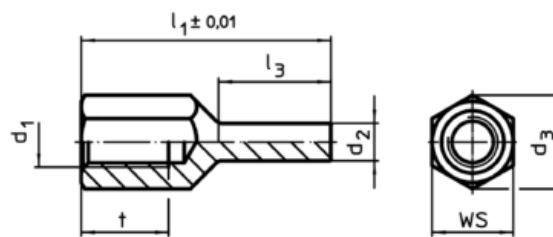
Material

- Heat-treated steel, tempered, blackened

Drawing



picture 1



picture 2

Order information

Dimensions						WS	Tightening torque max.	g	Art. No.
l_1 $\pm 0,01$	d_1	d_2	l_3	t	d_3				
with female thread – picture 2									
30	M6	4	13,5	9	11	10	7	9	22680.0454

Application example

