

## Seating Pins • pin shape

22680.0452



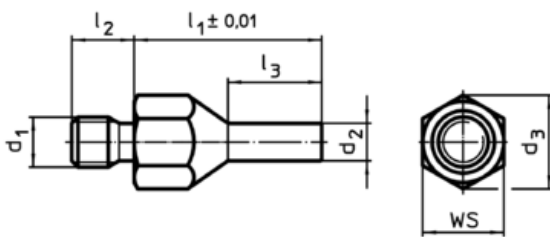
### Product Description

To be used as solid and precise seat and stop. The pin-shaped form of this locating pin allows an application in components with narrow seating points. Surface induction hardened and ground.

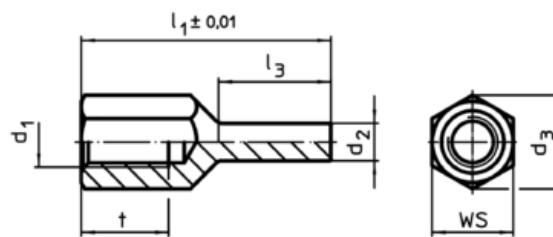
### Material

- Heat-treated steel, tempered, blackened

### Drawing




picture 1



picture 2

### Order information

Dimensions						WS	Tightening torque max.		Art. No.
$l_1$ $\pm 0,01$	$d_1$	$d_2$	$l_3$	$t$	$d_3$				
with female thread – picture 2									
20	M6	4	8,5	6	11	10	7	6	22680.0452

### Application example

