

## Seating Pins· pin shape

22680.0436



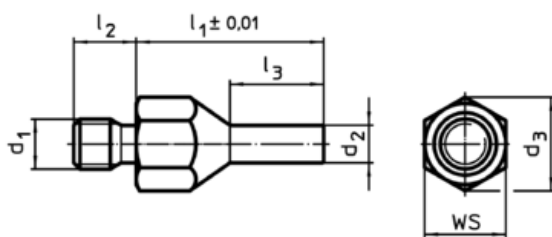
### Product Description

To be used as solid and precise seat and stop. The pin-shaped form of this locating pin allows an application in components with narrow seating points. Surface induction hardened and ground.

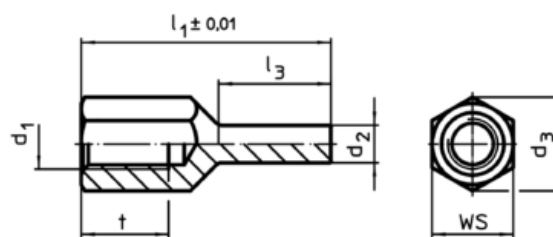
### Material

- Heat-treated steel, tempered, blackened

### Drawing



picture 1



picture 2

### Order information

l <sub>1</sub> ±0,01	d <sub>1</sub>	Dimensions				d <sub>3</sub>	WS [mm]	Tightening torque max. [Nm]	g	Art. No.
		d <sub>2</sub>	l <sub>2</sub>	l <sub>3</sub>	[mm]					
with male thread – picture 1										
40	M12	8	14	20	21,2	19	60	56	22680.0436	

### Application example

