

Seating Pins • pin shape

22680.0434



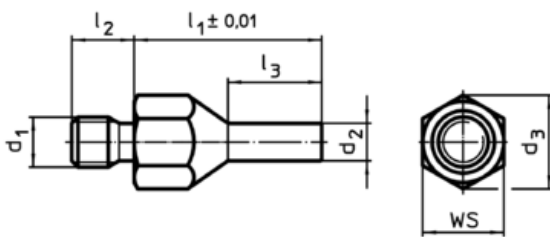
Product Description

To be used as solid and precise seat and stop. The pin-shaped form of this locating pin allows an application in components with narrow seating points. Surface induction hardened and ground.

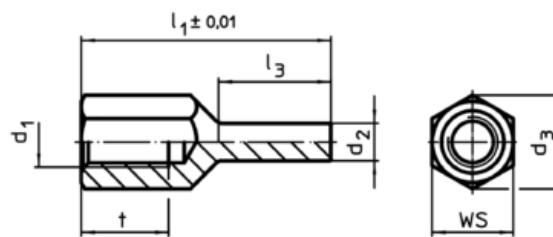
Material

- Heat-treated steel, tempered, blackened

Drawing



picture 1



picture 2

Order information

l ₁ ±0,01	d ₁	Dimensions				d ₃	WS [mm]	Tightening torque max. [Nm]	g	Art. No.
		d ₂	l ₂	l ₃	[mm]					
with male thread – picture 1										
60	M12	6	14	30	21,2	19	60	75	22680.0434	

Application example

