

Seating Pins • pin shape

22680.0404



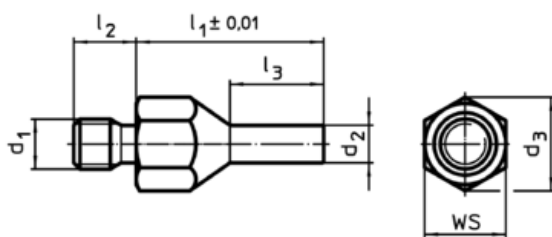
Product Description

To be used as solid and precise seat and stop. The pin-shaped form of this locating pin allows an application in components with narrow seating points. Surface induction hardened and ground.

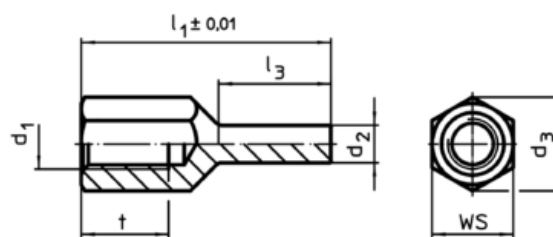
Material

- Heat-treated steel, tempered, blackened

Drawing



picture 1



picture 2

Order information

l_1 $\pm 0,01$	d_1	Dimensions				WS [mm]	Tightening torque max. [Nm]	[g]	Art. No.
		d_2 [mm]	l_2	l_3	d_3				
with male thread – picture 1									
30	M6	4	8	15	11	10	7	12	22680.0404

Application example

