

Locating Pins with ball end

22630.0576



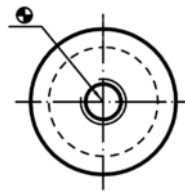
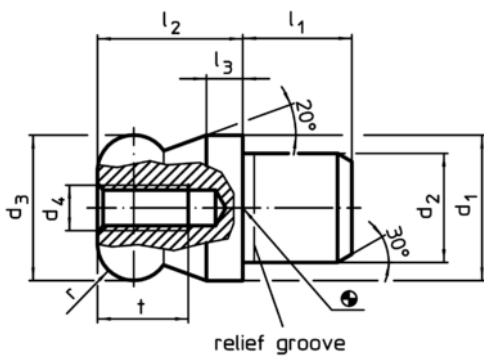
Product Description

Ball ended locating pins facilitate easy inserting and removing avoiding clamping inclination.

Material

- Stainless steel 1.4305, ground, surface heat-treated

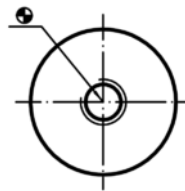
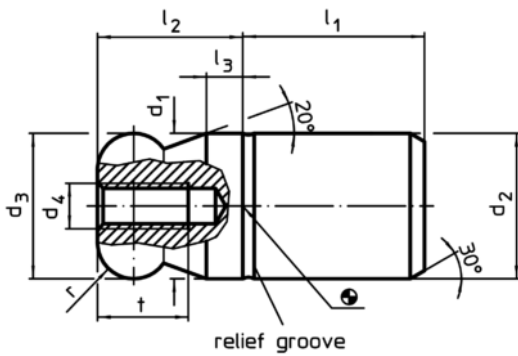
Drawing



picture 1



picture 2



picture 3



picture 4

Order information

Dimensions										Location hole	[g]	Art. No.
d ₁	d ₂	d ₃	d ₄	l ₁	l ₂	l ₃	t	r	H7			
g6	n6	-0,01 -0,05										
[mm]										[mm]		
with ball end plain, not stepped – picture 3, Stainless steel												
16	16	16	M5	20	16	4	10	4	16	51	22630.0576	

Application example

