

Locating Pins with ball end

22630.0550



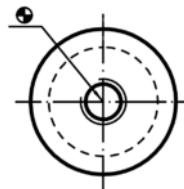
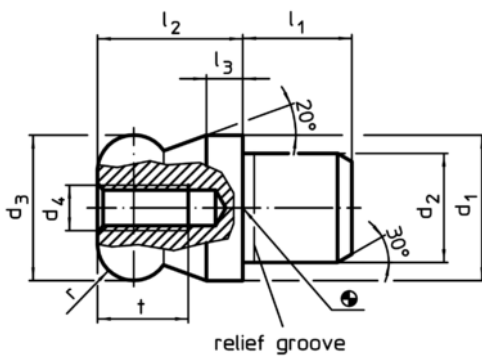
Product Description

Ball ended locating pins facilitate easy inserting and removing avoiding clamping inclination.

Material

- Tool steel, hardened, blackened and ground

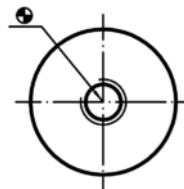
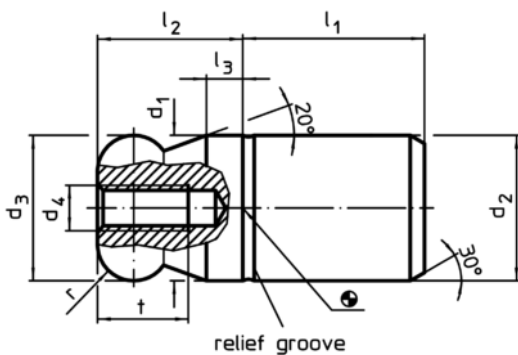
Drawing



picture 1



picture 2



picture 3



picture 4

Order information

Dimensions										Location hole	[g]	Art. No.
d ₁	d ₂	d ₃	d ₄	l ₁	l ₂	l ₃	t	r	H7			
g6	n6	-0,01 -0,05		[mm]						[mm]		
with ball end plain, not stepped – picture 3, Tool steel												
50	50	50	M6	50	50	12	12	12		50	1422	22630.0550

Application example

