

Locating Pins with ball end

22630.0540



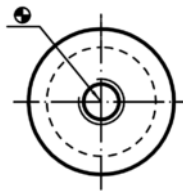
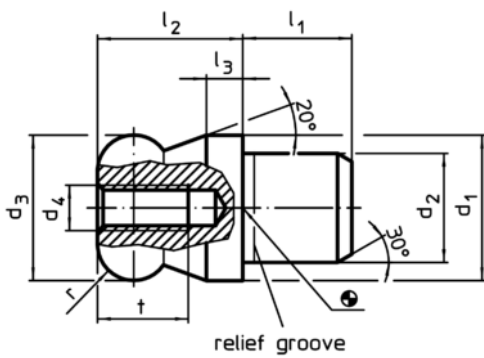
Product Description

Ball ended locating pins facilitate easy inserting and removing avoiding clamping inclination.

Material

- Tool steel, hardened, blackened and ground

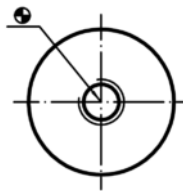
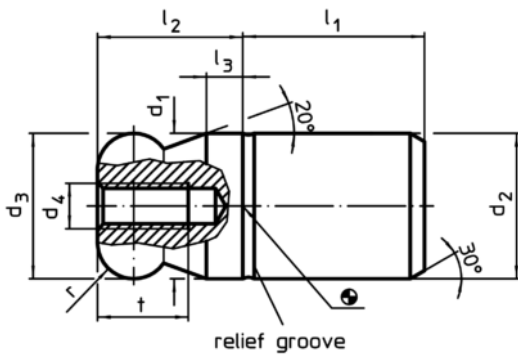
Drawing



picture 1



picture 2



picture 3



picture 4

Order information

d ₁	d ₂	d ₃	d ₄	Dimensions						Location hole H7		Art. No.	
				l ₁	l ₂	l ₃	t	r					
g6	n6	-0,01 -0,05											
				[mm]						[mm]	[g]		
with ball end plain, not stepped – picture 3, Tool steel													
40	40	40	M6	40	40	10	12	10		40	729	22630.0540	

Application example

