

Locating Pins with ball end

22630.0520



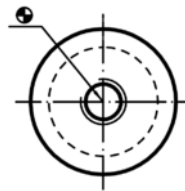
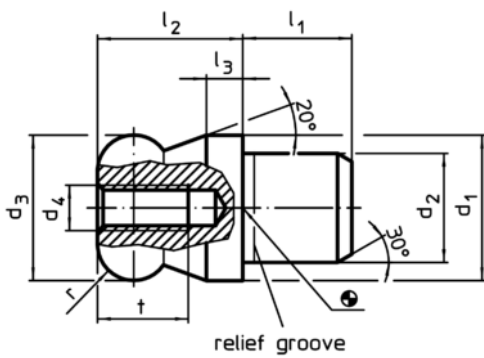
Product Description

Ball ended locating pins facilitate easy inserting and removing avoiding clamping inclination.

Material

- Tool steel, hardened, blackened and ground

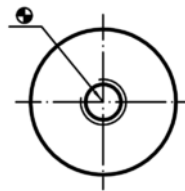
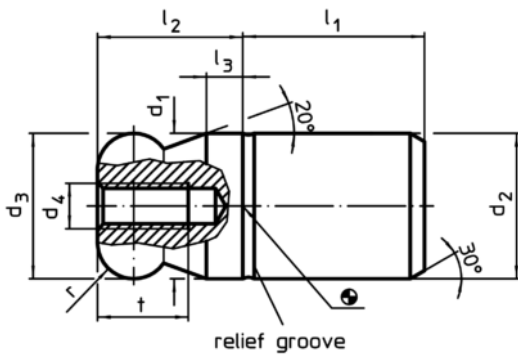
Drawing



picture 1



picture 2



picture 3



picture 4

Order information

Dimensions										Location hole	[g]	Art. No.
d ₁	d ₂	d ₃	d ₄	l ₁	l ₂	l ₃	t	r	H7			
g6	n6	-0,01 -0,05										
[mm]										[mm]		
with ball end plain, not stepped – picture 3, Tool steel												
20	20	20	M5	25	20	5	10	5	20	101	22630.0520	

Application example

