

Locating Pins • with bore hole similar to DIN 6321

22630.0243



Product Description

Cylindric locating pins for locating workpieces in toleranced holes and also to be used as stops and feet.

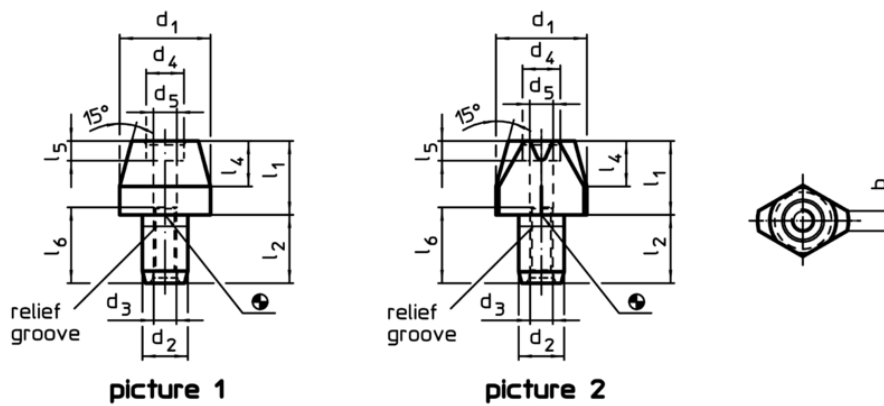
Flattened locating pins used to overcome differences in tolerances, between holes or to position an element in one direction only.

Apart from size 6 additional safety by fastening possibilities from up and down (can also be used for dismounting). The outer dimensions are similar to DIN 6321.

Material

- Case-hardened steel, case-hardened, blackened and ground

Drawing



Order information

Dimensions										Location hole	Art. No.	
d_1	l_1	b	d_2	l_2	d_3	l_4	d_5	d_6	l_6	H7		[g]
[mm]										[mm]		
g6			k6									
locating pin, flattened, with bore hole – picture 2												
8	16	1,6	6	9	M3	6	2,6	M2,5	10	6	4,4	22630.0243

Application example

