

Locating Bushings, plain for lifting pins

22350.1914



Product Description

Locating bushings are used for quick and safe locating of lifting pins EH 22350. This design is suitable for applications which require installation flush to the surface. Corrosion and abrasion resistant.

Material

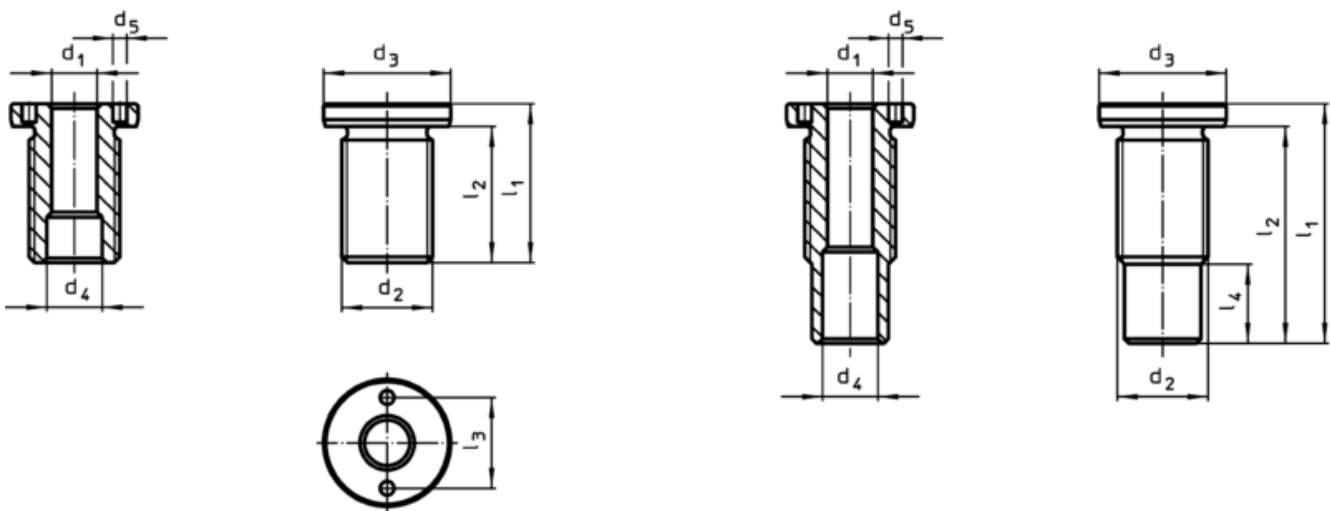
- Stainless steel 1.4542, precipitation-hardened

Assembly

Ensure safe tolerances and consistent function. Easily incorporable into different materials. Can be used in thin-walled pieces. Bush can be easily installed via optional assembly tool.

Can be mounted in blind holes. In the case of thin-walled pieces, assembly is carried out using a lock nut.

Drawing



size M16/M16x1,5/M20
M20x1,5/M24x1,5/M30x2

size M24/M30/M36x2

Order information

Dimensions		For nominal length l [mm]	Dimensions						Tightening torque max. [Nm]	x ¹⁾ [mm]	Carrying force ¹⁾			For lifting pin	Art. No.	
d ₁ H11 [mm]	d ₂ [mm]		d ₃ -0,2	d ₄ +0,3	d ₅ +0,1	l ₁	l ₂	l ₃			F ₁	F ₂	F ₃			[g]
10	M20	35	28	12,2	5,1	45	39	20	100	1,5	2,7	2,4	2,1	22350.0625 / .0725	70	22350.1914

¹⁾ for a 5-fold safety against breakage

Accessories

Suitable for size d ₁ [mm]	Pin spacing ±0,1 [mm]	Pin diameter -0,1 [mm]	Square drive [inch]	Art. No.
adjustable face wrench, offset				
16/20/25	–	5		309
face wrench (socket wrench insert)				
10	20	5	1/2	136

Application example

