

## Ball Lock Pins· self-locking, with safety handle

22350.1094



### Product Description

For quick fastening, locking, adjusting, changing and securing. Quickly and easily unlockable for frequently repeated connections.

All versions are corrosion resistant. When using stainless steel 1.4542: high-strength, hardened, abrasion resistant pin with high load capacity.

Robust safety handle (press button not overlaying). Shape of grip protects from unintentional use of the press button.

#### Material

##### Pin part

- Stainless steel 1.4542, precipitation-hardened

##### Handle

- Stainless steel

##### Press button

- Stainless steel

##### Spring

- Stainless steel

#### Operation

The balls are unlocked by pressing the knob.

#### Characteristic

Types from stainless steel 1.4542 with marking below the balls.

#### More information

#### Notes

Special types on request.

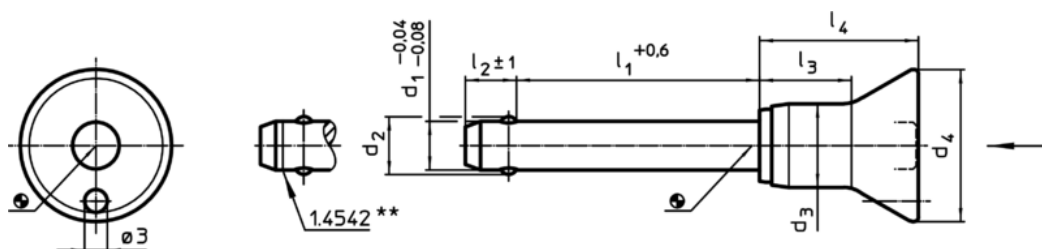
#### Accessories

Can easily be fitted with retaining cable EH 22400.

#### Further products

- Locating Bushings, for ball lock pins and socket pins
- Locating Bushings, with flange, for ball lock pins and socket pins
- Retaining Cables
- Positioning Bushings, with collar
- Positioning Bushings, without collar

### Drawing



\*\* Types from stainless steel 1.4542 with marking.

### Order information

Dimensions								Location hole	max.		Shearing resistance, double <sup>1)</sup> min.	Art. No.	
d <sub>1</sub>	l <sub>1</sub>	d <sub>2</sub>	d <sub>3</sub>	d <sub>4</sub>	l <sub>2</sub>	l <sub>3</sub>	l <sub>4</sub>	H11			[kN]		
-0,04	+0,6				±1			[mm]	[°C]	[g]			
			[mm]										
Stainless steel													
20	100	24,8	23,4	38	17	29,5	43,1	20	250	398	403	22350.1094	

<sup>1)</sup> Shearing resistance similar to DIN 50141

Application example

