

## Ball Lock Pins· self-locking, with safety handle

22350.1074



### Product Description

For quick fastening, locking, adjusting, changing and securing. Quickly and easily unlockable for frequently repeated connections.  
All versions are corrosion resistant. When using stainless steel 1.4542: high-strength, hardened, abrasion resistant pin with high load capacity.  
Robust safety handle (press button not overlaying). Shape of grip protects from unintentional use of the press button.

### Material

#### Pin part

- Stainless steel 1.4542, precipitation-hardened

#### Handle

- Stainless steel

#### Press button

- Stainless steel

#### Spring

- Stainless steel

### Operation

The balls are unlocked by pressing the knob.

### Characteristic

Types from stainless steel 1.4542 with marking below the balls.

### More information

### Notes

Special types on request.

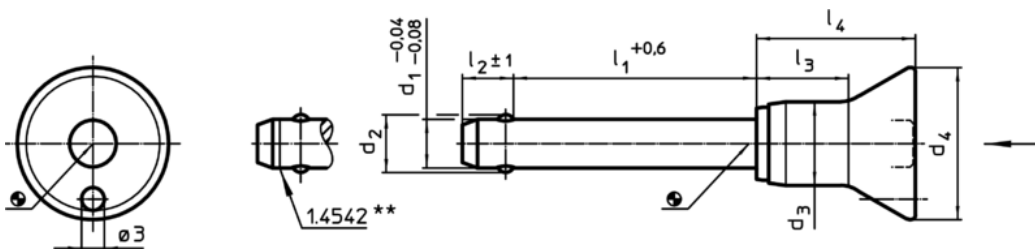
### Accessories

Can easily be fitted with retaining cable EH 22400.

### Further products

- Locating Bushings, for ball lock pins and socket pins
- Locating Bushings, with flange, for ball lock pins and socket pins
- Retaining Cables
- Positioning Bushings, with collar
- Positioning Bushings, without collar

### Drawing



\*\* Types from stainless steel 1.4542 with marking.

### Order information

Dimensions								Location hole	max.		Shearing resistance, double <sup>1)</sup> min.	Art. No.
d <sub>1</sub>	l <sub>1</sub>	d <sub>2</sub>	d <sub>3</sub>	d <sub>4</sub>	l <sub>2</sub>	l <sub>3</sub>	l <sub>4</sub>	H11			[kN]	
-0,04 -0,08	+0,6				±1			[mm]	[°C]	[g]		
[mm]												
Stainless steel												
12	70	14,5	16,5	28	10,6	23,1	33,5	12	250	116	144	22350.1074

<sup>1)</sup> Shearing resistance similar to DIN 50141

Application example

