

Ball Lock Pins· self-locking, with safety handle

22350.1061



Product Description

For quick fastening, locking, adjusting, changing and securing. Quickly and easily unlockable for frequently repeated connections.
All versions are corrosion resistant. When using stainless steel 1.4542: high-strength, hardened, abrasion resistant pin with high load capacity.
Robust safety handle (press button not overlaying). Shape of grip protects from unintentional use of the press button.

Material

Pin part

- Stainless steel 1.4542, precipitation-hardened

Handle

- Stainless steel

Press button

- Stainless steel

Spring

- Stainless steel

Operation

The balls are unlocked by pressing the knob.

Characteristic

Types from stainless steel 1.4542 with marking below the balls.

More information

Notes

Special types on request.

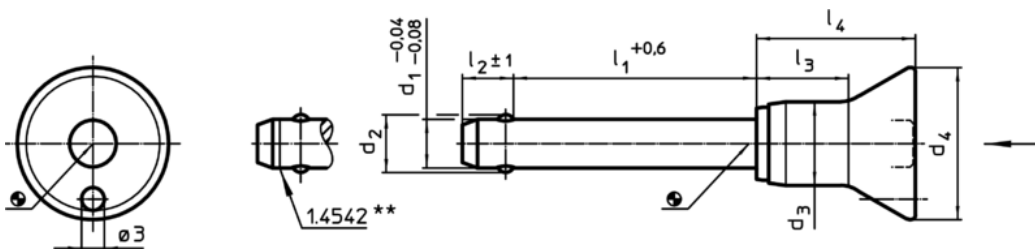
Accessories

Can easily be fitted with retaining cable EH 22400.

Further products

- Locating Bushings, for ball lock pins and socket pins
- Locating Bushings, with flange, for ball lock pins and socket pins
- Retaining Cables
- Positioning Bushings, with collar
- Positioning Bushings, without collar

Drawing



** Types from stainless steel 1.4542 with marking.

Order information

Dimensions								Location hole	max.		Shearing resistance, double ¹⁾ min.	Art. No.
d_1	l_1	d_2	d_3	d_4	l_2	l_3	l_4	H11			[kN]	
-0,04 -0,08	+0,6				± 1			[mm]	[°C]	[g]		
[mm]												
Stainless steel												
12	100	14,5	16,5	28	10,6	23,1	33,5	12	250	140	144	22350.1061

¹⁾ Shearing resistance similar to DIN 50141

Application example

