

## Ball Lock Pins• self-locking, with safety handle

22350.1031



## Product Description

For quick fastening, locking, adjusting, changing and securing. Quickly and easily unlockable for frequently repeated connections.

All versions are corrosion resistant. When using stainless steel 1.4542: high-strength, hardened, abrasion resistant pin with high load capacity.

Robust safety handle (press button not overlaying). Shape of grip protects from unintentional use of the press button.

## Material

## Pin part

- Stainless steel 1.4542, precipitation-hardened

## Handle

- Stainless steel

## Press button

- Stainless steel

## Spring

- Stainless steel

## Operation

The balls are unlocked by pressing the knob.

## Characteristic

Types from stainless steel 1.4542 with marking below the balls.

## More information

## Notes

Special types on request.

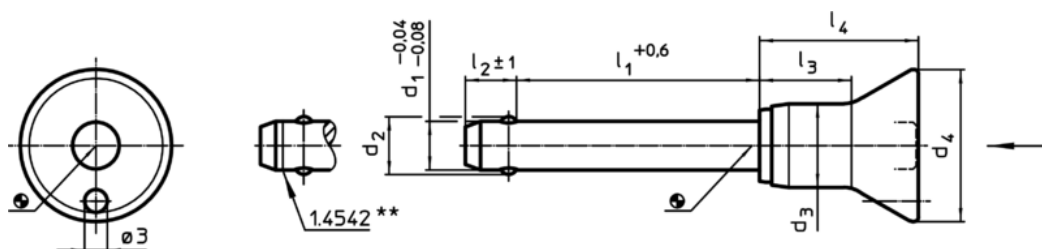
## Accessories

Can easily be fitted with retaining cable EH 22400.

## Further products

- Locating Bushings, for ball lock pins and socket pins
- Locating Bushings, with flange, for ball lock pins and socket pins
- Retaining Cables
- Positioning Bushings, with collar
- Positioning Bushings, without collar

## Drawing



\*\* Types from stainless steel 1.4542 with marking.

## Order information

| Dimensions      |                |                |                |                |                |                |                | Location hole H11 | max. |     | Shearing resistance, double <sup>1)</sup> min. | Art. No.   |
|-----------------|----------------|----------------|----------------|----------------|----------------|----------------|----------------|-------------------|------|-----|--|------------|
| d <sub>1</sub>  | l <sub>1</sub> | d <sub>2</sub> | d <sub>3</sub> | d <sub>4</sub> | l <sub>2</sub> | l <sub>3</sub> | l <sub>4</sub> |                   |      |     |  |            |
| -0,04<br>+0,08  | +0,6           |                |                |                | ±1             |                |                |                   |      |     |  |            |
| [mm]            |                |                |                |                |                |                |                | [mm]              | [°C] | [g] | [kN]   |            |
| Stainless steel |                |                |                |                |                |                |                |                   |      |     |  |            |
| 8               | 60             | 9,5            | 13,3           | 24             | 8,2            | 17,4           | 27,5           | 8                 | 250  | 54  | 63   | 22350.1031 |

<sup>1)</sup> Shearing resistance similar to DIN 50141

Application example

