

## Ball Lock Pins· self-locking, with safety handle

22350.1015



### Product Description

For quick fastening, locking, adjusting, changing and securing. Quickly and easily unlockable for frequently repeated connections.  
All versions are corrosion resistant. When using stainless steel 1.4542: high-strength, hardened, abrasion resistant pin with high load capacity.  
Robust safety handle (press button not overlaying). Shape of grip protects from unintentional use of the press button.

#### Material

##### Pin part

- Stainless steel 1.4542, precipitation-hardened

##### Handle

- Stainless steel

##### Press button

- Stainless steel

##### Spring

- Stainless steel

#### Operation

The balls are unlocked by pressing the knob.

#### Characteristic

Types from stainless steel 1.4542 with marking below the balls.

#### More information

#### Notes

Special types on request.

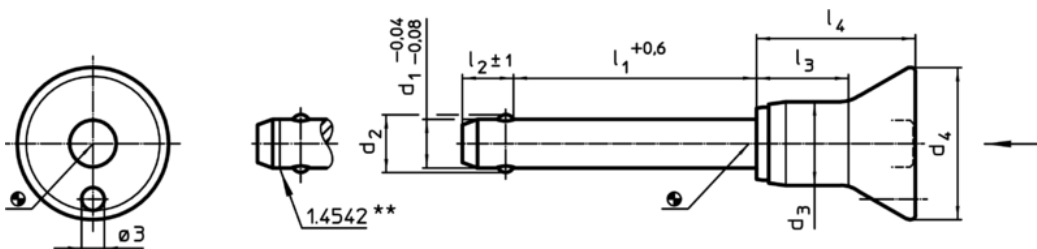
#### Accessories

Can easily be fitted with retaining cable EH 22400.

#### Further products

- Locating Bushings, for ball lock pins and socket pins
- Locating Bushings, with flange, for ball lock pins and socket pins
- Retaining Cables
- Positioning Bushings, with collar
- Positioning Bushings, without collar

### Drawing



\*\* Types from stainless steel 1.4542 with marking.

### Order information

| Dimensions      |                |                |                |                |                |                |                | Location hole | max. |     | Shearing resistance, double <sup>1)</sup> min. | Art. No.   |
|-----------------|----------------|----------------|----------------|----------------|----------------|----------------|----------------|---------------|------|-----|--|------------|
| d <sub>1</sub>  | l <sub>1</sub> | d <sub>2</sub> | d <sub>3</sub> | d <sub>4</sub> | l <sub>2</sub> | l <sub>3</sub> | l <sub>4</sub> | H11           |      |     | [kN]   |            |
| -0,04<br>-0,08  | +0,6           |                |                |                | ±1             |                |                |               |      |     |  |            |
| [mm]            |                |                |                |                |                |                |                | [mm]          | [°C] | [g] |  |            |
| Stainless steel |                |                |                |                |                |                |                |               |      |     |  |            |
| 5               | 25             | 5,5            | 10,3           | 20             | 6              | 11,6           | 21             | 5             | 250  | 21  | 24   | 22350.1015 |

<sup>1)</sup> Shearing resistance similar to DIN 50141

Application example

