

Captive C-Washers · DIN 6371 with countersunk screw DIN 923

22280.0016



Product Description

Material

Countersunk screw

- Steel, blackened, quality 5.8

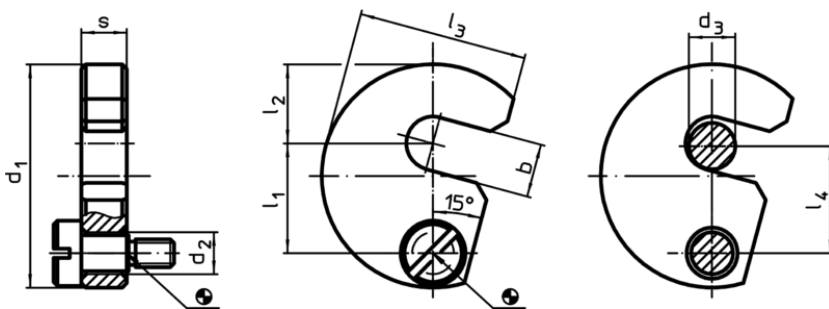
Captive C-Washer

- Heat-treated steel, tempered, blackened

Assembly

The captive C-washers can be installed using the included bolt. You can select either clockwise or anti-clockwise rotation.

Drawing



Order information

Nominal size d_3 [mm]	b	d_1	d_2	Dimensions					s -0,2	Suitable screw [mm]	[g]	Art. No.
				l_1	l_2	l_3	l_4	[mm]				
16	17,5	68	11	33,6	25	50	33	11,8	M8 x 12	229	22280.0016	

Application example

