

## Captive C-Washers· DIN 6371 with countersunk screw DIN 923

22280.0010



### Product Description

#### Material

##### Countersunk screw

- Steel, blackened, quality 5.8

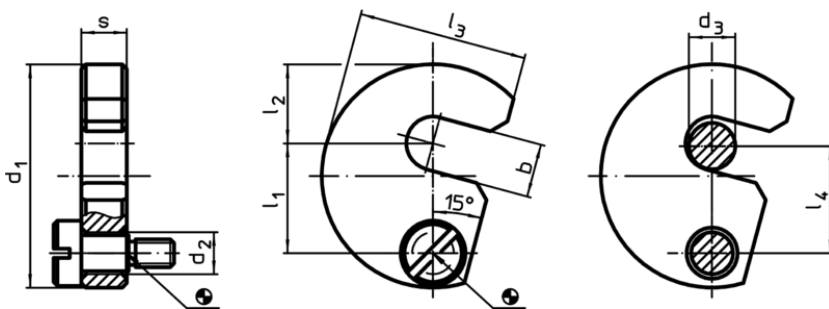
##### Captive C-Washer

- Heat-treated steel, tempered, blackened

#### Assembly

The captive C-washers can be installed using the included bolt. You can select either clockwise or anti-clockwise rotation.

### Drawing



### Order information

Nominal size $d_3$ [mm]	b	$d_1$	$d_2$	Dimensions [mm]					s -0,2	Suitable screw [mm]	[g]	Art. No.
				$l_1$	$l_2$	$l_3$	$l_4$					
10	11,5	48	9	23,6	17	36,5	23	9,8	M6 x 10	99	22280.0010	

Application example

