

## Clamping Catches

22260.0450



## Product Description

Clamping catches have a round running taper surface and enable fast and safe clamping and releasing with a relatively large adjustment range and high tensioning force. Due to the small gradient angle of the taper surface, the clamping catch is self-locking.

## Material

## Body

- Steel, case-hardened, blackened

## Screw

- Steel, nitrided

## Gear lever handle

- Steel, ground, blackened

## Ball knob

- Thermosetting plastic PF 31, black, DIN 319

## Assembly

Fix with screw bolt M 10 (SW 6). Ensure a tightening torque of max. 40 Nm.

## Operation

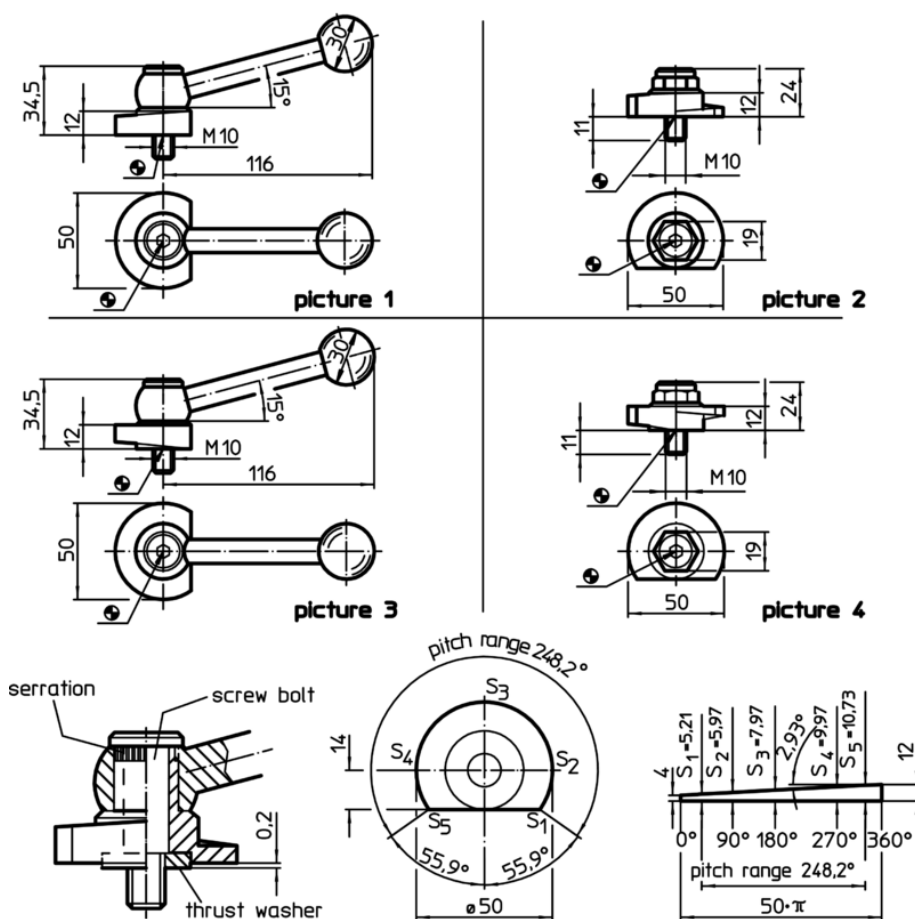
The screw bolt and the washer are adjustable. Once screwed in, the clamping catch can easily be turned to the desired position. For Art. No. 22260.0250 / .0251 and 22260.0450 / .0451, the serration helps to put the clamping lever to the preferred position.

## More information

## Notes

Left turn type can be supplied on request.

## Drawing



## Order information

	Art. No.
with adjustable clamping lever, pitch on bearing surface – picture 3, Steel	22260.0450

302

# Application example

